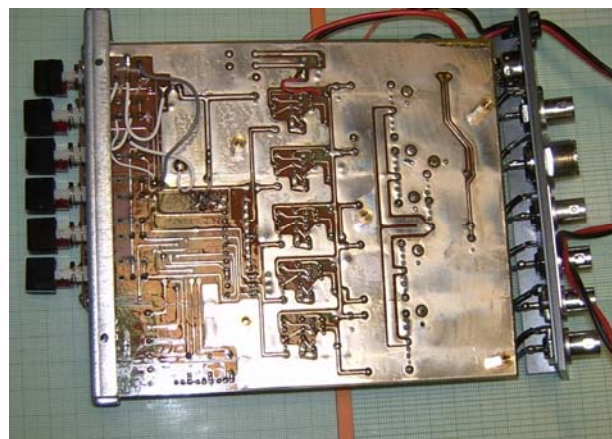
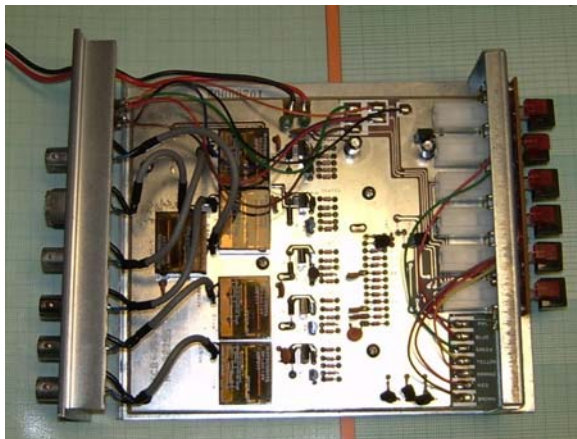
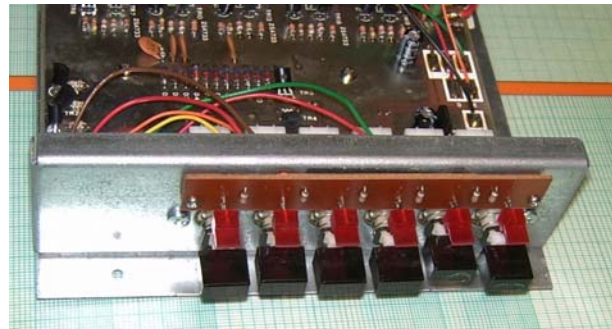


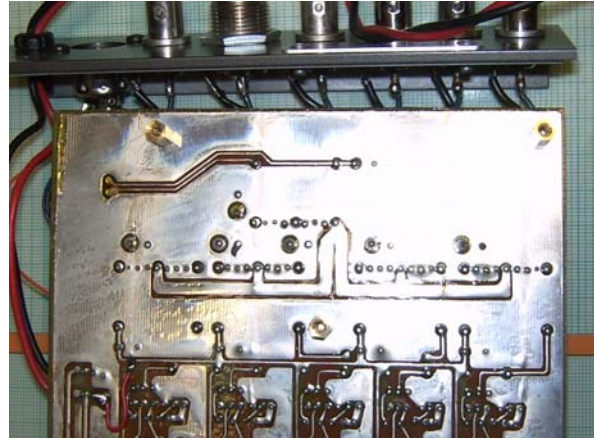
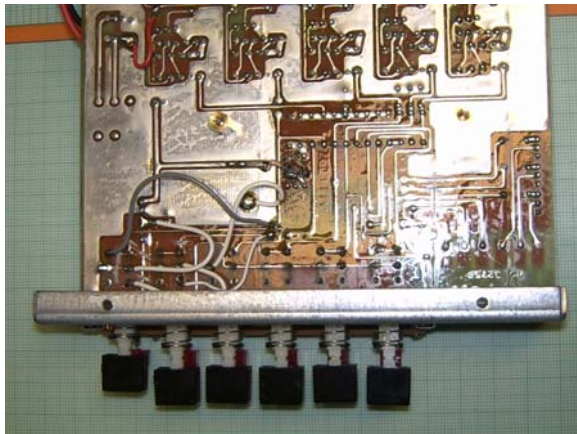


Der J.I.L. ACB-300 Antennenumschalter: eine kurze Beschreibung und Bedienungsanleitung

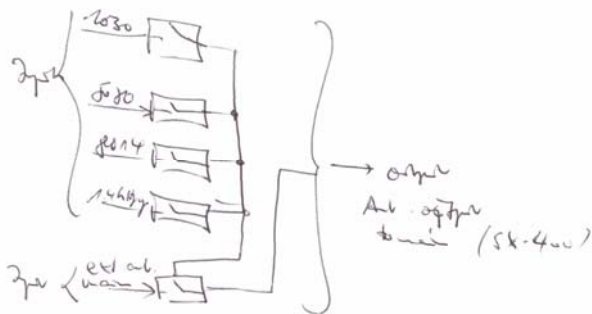


Dieser automatische Antennenumschalter erlaubt die verschiedenen Komponenten zusammen zu schalten. Er wird benötigt, wenn mehr als 1 Konverter gleichzeitig an den SX-400 angeschlossen werden soll. Die Kontrollbox kann auch manuell mittels Tastern an ihrer Frontplatte gesteuert werden. Hier einige Bilder aus dem Innenleben des Antennenumschalters.

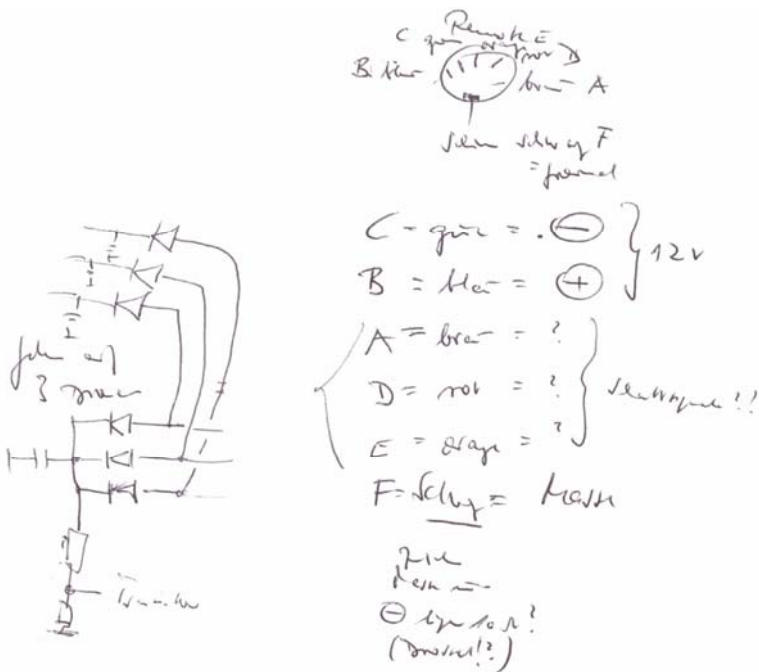




Hier noch eine grobe Skizzen zur Funktion (Umschalter mittels 5 Stck Relais des Typs Matsushita RF1-DC-12 ARF211)



Sowie eine Beschreibung der Buchse „Remote“ auf der Rückseite des Gehäuses



Im Anhang finden Sie eine Kopie der englischen Bedienungsanleitung des Antennenumschalters. Ich freue mich stets über Rückmeldung und beantworte gerne auch Fragen (vorzugsweise per Email).

Viele Grüße

Matthias

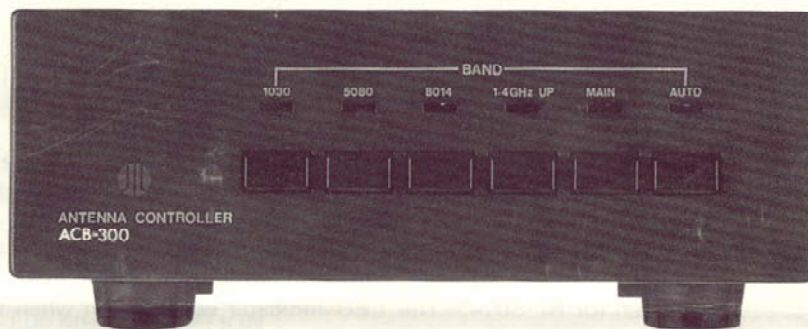
Email: DDIUS@AMSAT.ORG

Homepage: <http://www.dd1us.de>

Anlage:

Bedienungsanleitung ACB-300

OWNERS MANUAL

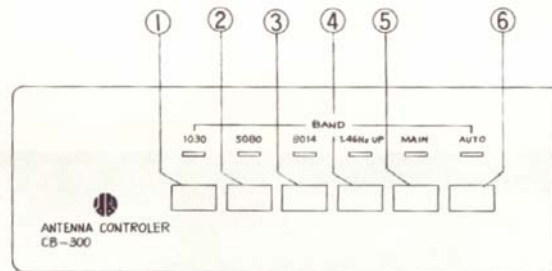


***J.I.L.* ACB-300**

**ANTENNA CONTROL BOX FOR
RF UP AND DOWN CONVERTERS
CONTROL FREQUENCY RANGE
100KHz-1.4GHz UP**

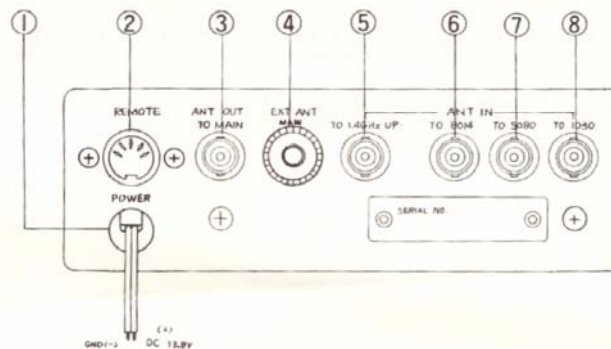
ACB-300 IS AN ANTENNA CONTROL SYSTEM FOR SX-400 SERIES RF-CONVERTERS WHEN CONNECTED TO SX-400. JUST SELECTING THE MODE OF ACB-300, THE SELECTED RF-CONVERTER WILL BE OPERATIVE. ALSO ACB-300 IS PROVIDED WITH A JACK TO CONTROL RF CONVERTERS AND SX-400 WITH AN EXTERNAL COMPUTER, ETC.

SWITCHES AND INDICATORS ON FRONT PANEL



1. 1030 Switch for RF-1030. The LED indicator will turn on when the switch is on.
2. 5080 Switch for RF-5080. The LED indicator will turn on when the switch is on.
3. 8014 Switch for RF-8014. The LED indicator will turn on when the switch is on.
4. 1.4 GHz UP Switch for an RF converter with frequency range above 1.4 GHz. The indicator will turn on when the switch is on.
5. MAIN Switch for SX-400. The LED indicator will turn on when the switch is on.
6. AUTO Switch for remote control of RF converters and SX-400 with an external computer, etc. The LED indicator will turn on when the switch is on.

CONNECTERS AND CABLES ON REAR PANEL



1. POWER Lead For connection to lead wires for SX-400
2. REMOTE Receptacle for an external computer, etc.
3. ANT OUT
TO MAIN Receptacle for connection to Antenna Jack of SX-400
4. EXT ANT
MAIN Receptacle for antenna for SX-400
5. TO 1.4 GHz UP. Receptacle for connection to a converter with frequency range above
1.4 GHz.
6. TO 8014 Receptacle for connection to RF-8014
7. TO 5080 Receptacle for connection to RF-5080
8. TO 1030 Receptacle for connection to RF-1030

OPERATION INSTRUCTIONS

PLEASE MAKE SURE THAT ALL JIL RF CONVERTERS AND SX-400 ARE PROPERLY CONNECTED AS SHOW. TURN THE POWER SWITCHES OF THE RF CONVERTERS AND SX-400 ON.

1. 100 KHz – 30 MHz RECEPTION

- a. Turn 1030 switch of ACB-300 on. LED indicator will turn on.
(Power switches of other RF converters are turned off.)
- b. RF-1030 is in stand-by condition. Follow the operation instructions in owner's manual for RF-1030.

2. 500 – 800 MHz RECEPTION

- a. Turn 5080 switch of ACB-300 on. LED indicator will turn on.
(Power switches of other RF converters are turned off.)
- b. RF-5080 is stand-by condition. Follow the operation instructions in owner's manual for RF-5080.

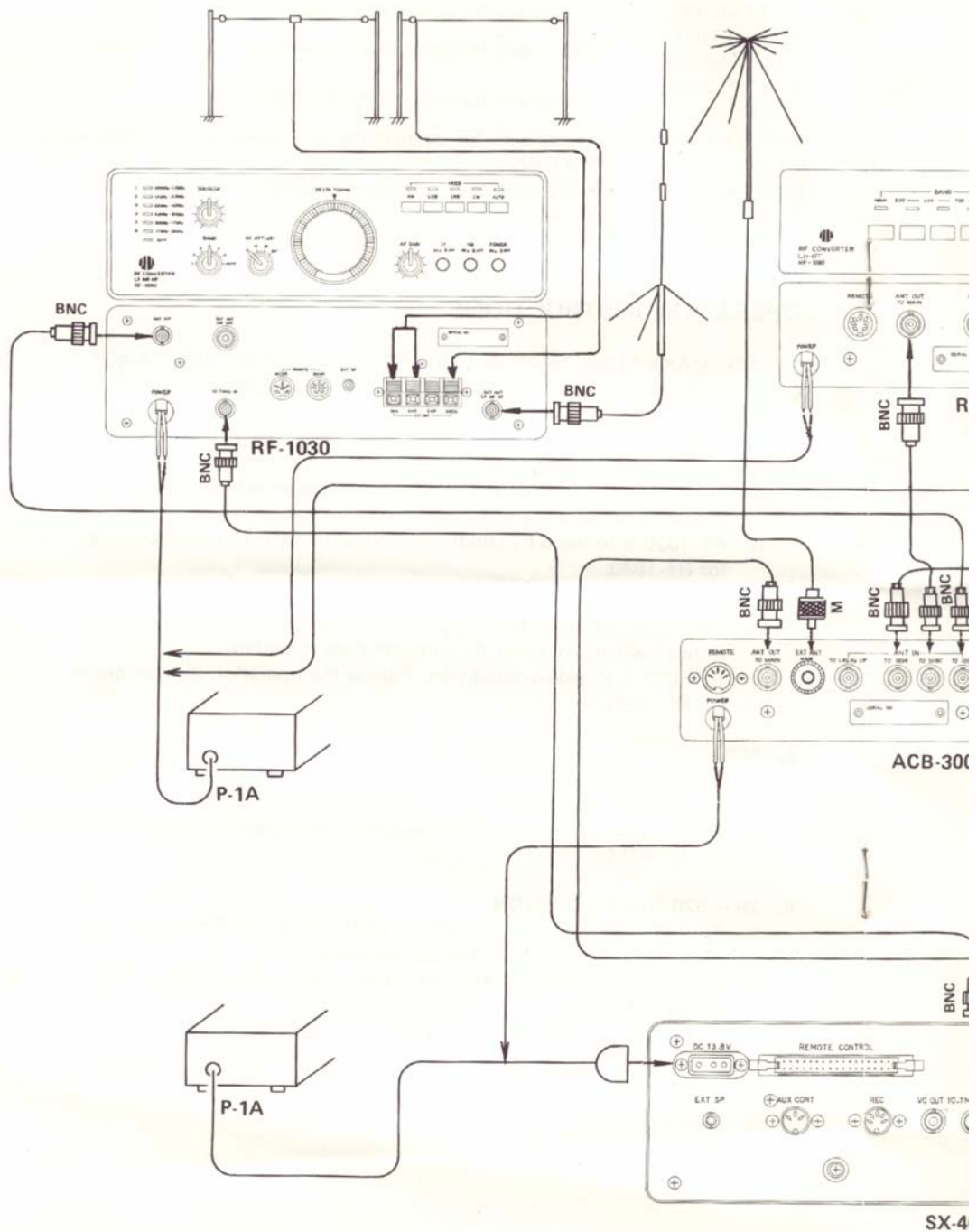
3. 800 – 1400 MHz RECEPTION

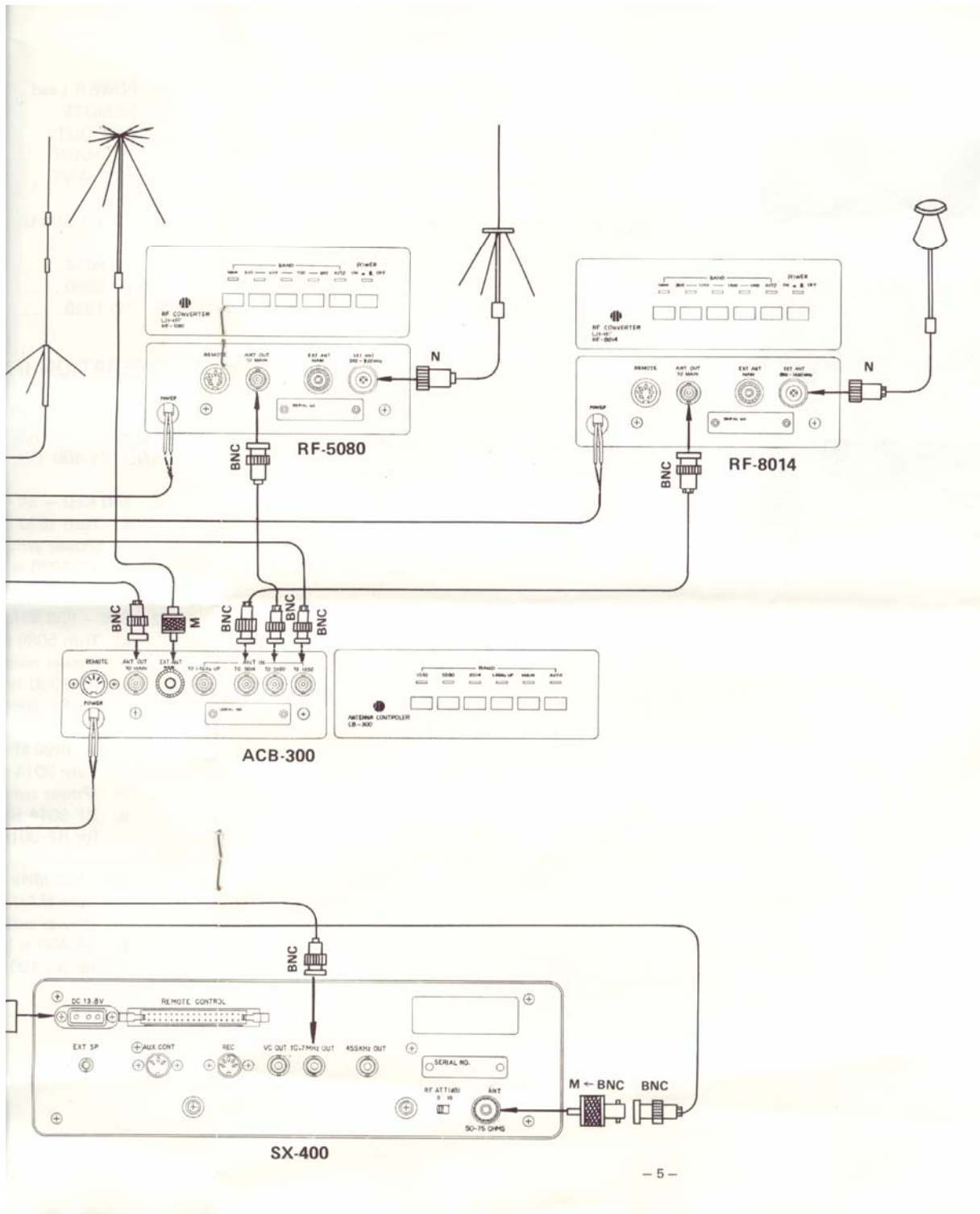
- a. Turn 8014 switch of ACB-300 on. LED indicator will turn on.
(Power switches of other RF converters are turned off.)
- b. RF-8014 is in stand-by condition. Follow the operation instructions in owner's manual for RF-8014.

4. 26 – 520 MHz RECEPTION

- a. Turn MAIN switch of ACB-300 on. LED indicator will turn on.
(Power switches of RF converters are turned off.)
- b. SX-400 is in stand-by condition. Follow the operation instructions in owner's manual for SX-400.

INSTALLATION INSTRUCTIONS

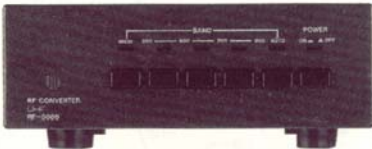




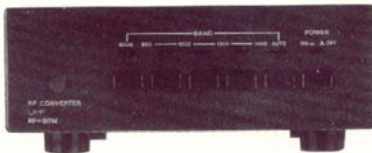
RF CONVERTERS IN SX-400 SERIES



RF-1030 Frequency Range: 100 KHz – 30 MHz USB, LSB, CW, AM
(* CW filter is required for CW signals reception)
Dimensions: (W)300 x (H)90 x (D)233 mm



RF-5080 Frequency Range: 500 – 800 MHz
Dimensions: (W)148 x (H)51 x (D)225 mm



RF-8014 Frequency Range: 800 – 1400 MHz
Dimensions: (W)148 x (H)51 x (D)225 mm